



MIDWEST UNLIMITED

• TOWER COMPONENTS •

VOLUME 1

800-927-2170 • 402-434-5446

Over 100,000 Products from more than 500 Vendors

**FALL PROTECTION • RIGGING • CONSTRUCTION • SAFETY • WORK WEAR
TOWER SUPPLIES AND COMPONENTS • WE SHIP ANYWHERE**

Now serving all your If you don't see what you need...

About Midwest Unlimited

Prices and Shipping

Prices are subject to change without notice and cannot be guaranteed. Orders will be billed at prices in effect at the time the order is received. The shipment of orders is subject to approval by our Credit Department. Possession of this catalog is not to be construed as an offer to sell.

Freight

All shipments are F.O.B. Shipping Point.

Returned Goods Policy

Most items may be returned with prior approval. Return Authorization Forms must accompany the return of all shipments. Returned stock items may be subject to a 10% or more restocking charge depending on the products or situation. Merchandise must be in the original factory package and be in new resalable condition. Special Order items cannot be returned without factory approval, and the factory restocking policy will apply. Authorized returns must be shipped prepaid. Call Customer Service at 402-434-5446.

Limitation of Liability

Midwest Unlimited's liability for any claim shall not exceed the purchase price of the order. We shall not be liable for special or consequential damages including but not limited to, personal injury, loss of profit, or cost of substitute goods. This limitation applies whether such claim arises from warranty or negligence and whether such claim arises from design, manufacture or sale.

Terms

All orders are shipped with approved credit cards unless the customer has been approved for open-account status. Open accounts are established after completion and approval of your credit application. No C.O.D. orders.

Defective Material

The manufacturers' warranties apply to all materials sold by Midwest Unlimited. No other warranty expressed or implied is offered. Contact the Customer Service Department at 402-434-5446 for prior authorization before returning defective material.

Sales Desk

Hours

- Monday - Friday, 7:30 am to 5:00 pm CDT

Phone

- 402-434-5446 or 800-927-2170

Fax

- 402-434-5449

Email:

- Sales@MidwestUnlimited.com

Website

- www.MidwestUnlimited.com

Notice: All trademarks and photos contained herein are the property of their respective owners. Not responsible for typographical or photographic errors. Prices subject to change without notice.

To Our Friends,

Since our beginning in 1947 as a machinery and supply house, Midwest Unlimited has offered products and services to contractors throughout the Midwest. More than ten years ago we began bringing to you the most complete offering of rigging, tower and steel erection components, fall protection and supplies in the industry.

We now introduce our latest product line: Tower Components. This catalog is a small example of the extensive amount of Tower Components we carry, so if you do not see an item you need please do not hesitate to call.

We will continue to offer the best service, delivery, products and knowledge that we consistently have for the past 67 years. Enjoy the catalog and look for future updates debuting more of our extensive product and service offerings. We look forward to serving you.

Jim Krupicka

Jim Krupicka
Midwest Unlimited



800-927-2170 • MidwestUnlimited.com

Tower Component needs. Call us. We have it. 800-927-2170.

Antenna Mounting Systems 2-3

Tower Sector Mounts	2
Crossover Plates	2
Tower Pipe/Dish Mounts	2
Pipe To Pipe Mounts	2
Monopole T-Arms	3
Monopole Low-Profile Platform	3
Monopole Collars	3
Monopole Pipe Standoffs and Dish Mount	3

Transmission Line Support 4-9

Waveguide Ladder	4
Waveguide Bridges	4
Waveguide Bridge Accessories	4.5
Coax Accessories	5-9

JMA-PPC Materials 10

Connectors	10
Tools	10

Grounding Accessories 11-14

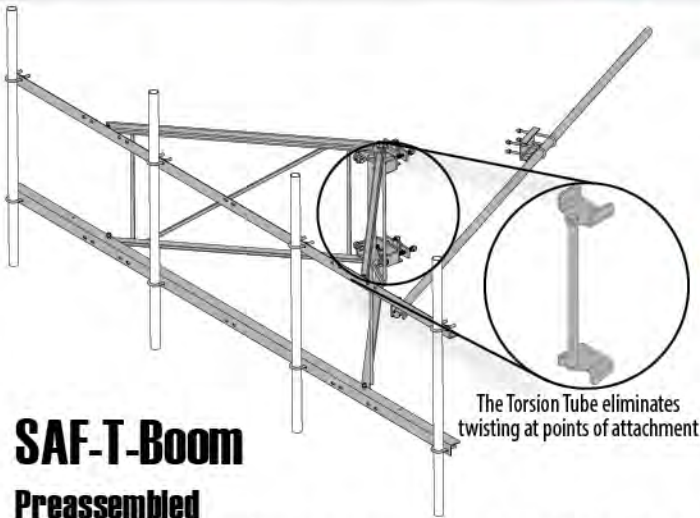
Coax Grounding Kits	11
Lightning and Ground Rods	11
Buss Bars and Accessories	11
Shots and Molds	12-14
Copper Wire	14
Lugs	14

Cable & Hardware Accessories 15-23

Site Accessories	9
Guy Anchors	15
Guy Cable and Hardware	15-19
Banding	19
Site Hardware	21-23
Infrastructure Accessories	23
Antenna Mounting Pipe	23

Now serving all your If you don't see what you need...

Antenna Mounting Systems



SAF-T-Boom

Preassembled

Mounts to straight or tapered tower legs, round members 1½" to 5¾" OD and angle from 2½" x 2½" to 4" x 4". The pivot feature allows for rotation of the frame to desired azimuths. The mounting bracket provides additional flexibility with 0-5° down-tilt capability. One 10' tie-back arm included. Includes enough mounting hardware for four (4) 2¾" OD antenna pipes. Antenna Pipe sold separately.

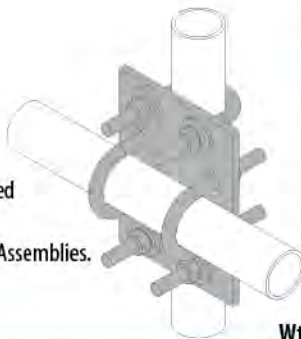
Design Specifications:

- Meets the latest revision of ANSI/TIA-222 Codes
- (4) 8' x 1' Panels at 200'
- 120 mph Basic Wind Speed
- Dead Load 500 lbs
- Live Load 250 lbs

Item #		Wt.
TCPBOOM10	10' SAF-T-Boom with 3' Standoff	330.00 lbs
TCPBOOM12	12' SAF-T-Boom with 3' Standoff	351.00 lbs
TCPBOOMLLA	Large Leg Adapter Kit	51.00 lbs

Pipe to Pipe Crossover Kit

- Allows two round pipes or solids to be attached together at a right angle to each other.
- Kit includes one (1) plate and four (4) U-Bolt Assemblies.

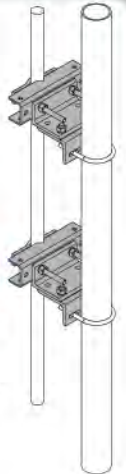


Item #		Wt.
TCPCO2X2	2¾" OD round to 2¾" OD round	13.80 lbs
TCPCO2X25	2¾" OD round to 2¾" OD round	14.50 lbs
TCPCO2X3	2¾" OD round to 3½" OD round	15.20 lbs
TCPCO2X4	2¾" OD round to 4½" OD round	16.50 lbs

Universal Pipe Mounting Kit

- Accommodates pipe sizes from 2¾" up to 4½" OD.
- Mount can be used on both tapered and straight leg towers.
- Pipe sold separately.

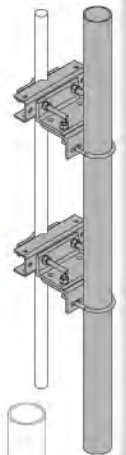
Item #		Wt.
TCPUPM	Small: fits 1½" to 5 9/16" OD legs and 2½" x 2½" to 4" x 4" angle legs	83.00 lbs
TCPUPMLL	Large: fits 5¾" to 10¾" OD legs and 5" x 5" to 8" x 8" angle legs	103.00 lbs



Universal Microwave Mounting Kit

- Mounts microwave dishes to either round or angle legs.
- Kits also adapt to straight or tapered towers.
- Kits include 4½" OD x 7' pipe.

Item #	Size	Wt.
TCPUDM	Small: fits 1½" to 5 9/16" OD legs and 2½" x 2½" up to 4" x 4" angle legs	145.00 lbs
TCPUDMLL	Large: fits 5¾" to 10¾" OD legs and 5" x 5" up to 8" x 8" angle legs	165.00 lbs



Pipe to Pipe Mounting Kit

- Allows attachment of a pipe 1½" to 5" OD to a tower leg 1½" to 5" OD.
- Mounting hardware included.
- Pipe sold separately.

Item #		Wt.
TCPPP1X5	Kit of two	25.5 lbs



Double Antenna Clamp 2' Separation

Allows for dual antenna attachment to Universal Sidearms and Heavy Duty Sidearms. Accepts 1½" OD to 5" OD Antenna Mounting Pipes. Pipes sold separately.

Item #		Wt.
TCPDAC		30.66 lbs

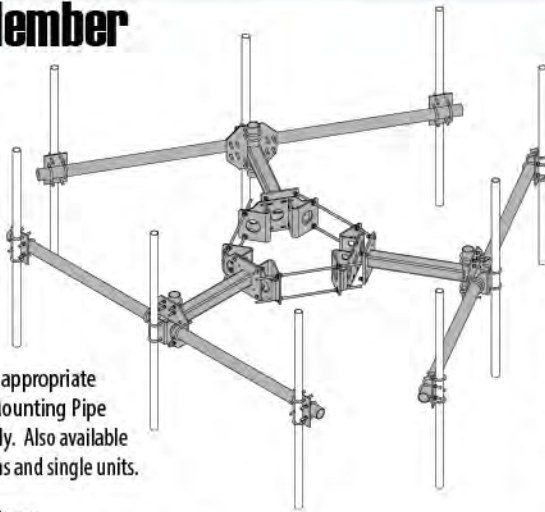


Tower Component needs. Call us. We have it. 800-927-2170.

Antenna Mounting Systems

Round Member T-Arms

Designed to accommodate multiple face widths and antenna configurations. Each kit includes three (3) T-Arm Assemblies and the appropriate Tri-Collar Bracket. Mounting Pipe Kits are sold separately. Also available in 5' Standoff Lengths and single units.



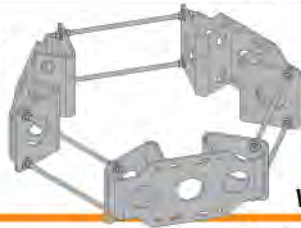
Design Specifications:

Meets the latest revision of ANSI/TIA-222 Codes
(4) 8' x 1' Panels at 200'
100 mph (193.12 kph) Basic Wind Speed
Dead Load 500 lbs (226.8 kg) • Live Load 250 lbs (113.4 kg)

Item #		Wt.
TCPRMTA4S	4' Face, 3' Standoff for 2/3 Mounting Pipes for 10" - 40" Poles	693.20 lbs
TCPRMTA4L	4' Face, 3' Standoff for 2/3 Mounting Pipes for 40" - 60" Poles	857.50 lbs
TCPRMTA8S	8' Face, 3' Standoff for 4/5 Mounting Pipes for 10" - 40" Poles	858.20 lbs
TCPRMTA8L	8' Face, 3' Standoff for 4/5 Mounting Pipes for 40" - 60" Poles	1022.5 lbs
TCPRMTA10S	10' Face, 3' Standoff for 4/5 Mounting Pipes for 10" - 40" Poles	906.20 lbs
TCPRMTA10L	10' Face, 3' Standoff for 4/5 Mounting Pipes for 40" - 60" Poles	1070.5 lbs
TCPRMTA12S	12' Face, 3' Standoff for 4/5 Mounting Pipes for 10" - 40" Poles	954.20 lbs
TCPRMTA12L	12' Face, 3' Standoff for 4/5 Mounting Pipes for 40" - 60" Poles	1118.5 lbs
TCPRMTAWW3	3' Walkway for Standoff Arm	67.00 lbs
TCPRMTAWW10	10' Walkway for T-Arm Face	137.00 lbs

Tri-Collar Bracket

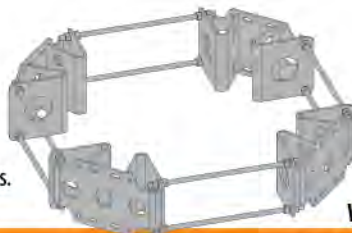
Used with Platforms or T-Arms. Universal surface mounting allows for a variety of antenna mounting applications.



Item #		Wt.
TCP1040TC	10" - 40" diameter	172.00 lbs
TCP1260UTC	12" - 60" diameter	336.00 lbs

Bi/Quad Collar Bracket

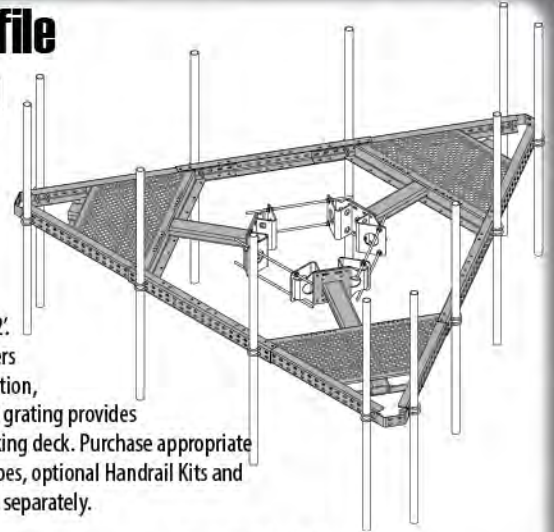
Offers the flexibility to handle either two (2) or four (4) sector arrangements.



Item #		Wt.
TCP1252QC	12" - 52"	244.00 lbs

Low Profile Platform Kit

This unique design allows for one Platform Kit to be used as one of two face widths: 10' or 12'. The prewelded corners allow for easy colocation, and expanded metal grating provides a safe and solid working deck. Purchase appropriate Tri-Collar Bracket, pipes, optional Handrail Kits and additional walkways separately.



Design Specifications:

Meets the latest revision of ANSI/TIA-222 Codes
(15) 8' x 1' Panels at 200'
120 mph Basic Wind Speed
Dead Load 1000 lbs • Live Load 500 lbs

Allowable Pole Diameters:

10' Face - 10" - 30" Diameter
12' Face - 10" - 50" Diameter

Item #		Wt.
TCPLP1012	10' or 12' Low Profile Platform	813.00 lbs
TCPLPHR10	10' Handrail Kit - 3 vertical pipes included	228.00 lbs
TCPLPHR12	12' Handrail Kit - 3 vertical pipes included	245.00 lbs

Monopole Dish Mount

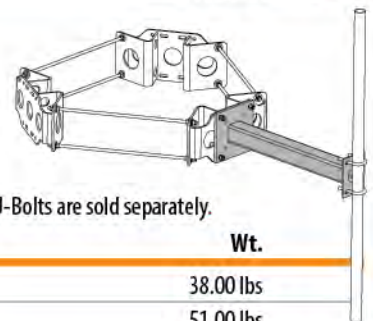
- Attaches directly to collar brackets and allows for dishes to be flush mounted to poles.
- Includes a welded on 4 1/2" OD x 5'3" mounting pipe and all hardware for attachment to collar bracket.



Item #	Wt.
TCPMMDM	80.15 lbs

Standoff Arm

- Comes with all hardware required for attachment to the Collar Bracket Assembly.
- 2 3/8" OD Antenna Mounting Pipes and U-Bolts are sold separately.



Item #	Size	Wt.
TCPMSO12	1' Standoff Arm	38.00 lbs
TCPMSO24	2' Standoff Arm	51.00 lbs
TCPMSO36	3' Standoff Arm	64.00 lbs
TCPMSO48	4' Standoff Arm	76.00 lbs
TCPMSO60	5' Standoff Arm	89.00 lbs
TCPMSO72	6' Standoff Arm	102.00 lbs

Now serving all your If you don't see what you need...

Transmission Line Support

Knock Down Waveguide Ladder Kit

- Ladders have 3' rung spacing.
- Available in two widths: 2'3" for twelve (12) runs of coax and 1'6" for eight (8) runs
- Each ladder section is furnished with two (2) splices and hardware to interconnect with the next section. (Attachment hardware included for angle member attachment.)

Item #		Wt.
TCPWG1012A	10' Ladder - 12 holes - 3' spacing	46.80 lbs
TCPWG2012A	20' Ladder - 12 holes - 3' spacing	88.60 lbs
TCPWG108A	10' Ladder - 8 holes - 3' spacing	45.00 lbs
TCPWG208A	20' Ladder - 8 holes - 3' spacing	80.20 lbs

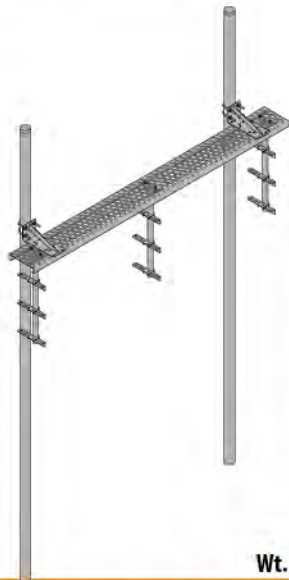


Waveguide Bridge

Direct Burial Type 15' 4" x 3-1/2" OD Posts

Each kit includes Grip Strut Channel, General Support Brackets, Posts, Pipe Caps and all hardware required for installation.

Item #		Wt.
TCPWB1103	1' x 10' Waveguide Bridge & (3) 3 Level Trapeze	286.60 lbs
TCPWB2103	2' x 10' Waveguide Bridge & (3) 3 Level Trapeze	348.90 lbs



Direct Burial Pipe Post Kit

- Provides support for Grip Strut Channel and General Support Brackets.
- Pipe Post has a 3 1/2" OD and requires a minimum of 3'6" of pipe embedded in concrete for a secure footing.
- Each Pipe Post includes one pipe cap.

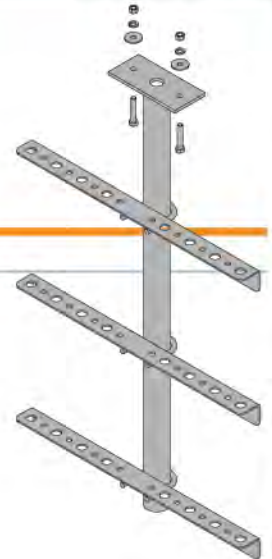
Item #	Size	Wt.
TCPWP13	3 1/2" OD x 13'4" pipe	105.80 lbs
TCPWP15	3 1/2" OD x 15'4" pipe	98.50 lbs
TCPWP18	3 1/2" OD x 18' pipe	115.50 lbs
TCP3CAP	Additional pipe cap, 3 1/2" OD	0.73 lbs



Triple-T Trapeze

Three (3) level Trapeze Kit will hold 24 lines. Accommodates 3/4" and 3/8" holes. For Snap-In and Butterfly Hangers.

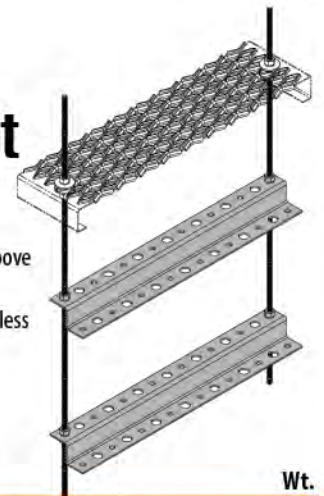
Item #	Wt.
TCPTTRAPEZE3	21.00 lbs



Universal Z-Bracket Trapeze Kit

- Allows transmission line to be placed both above and under the bracket.
- The single rung kits come with 3/8" x 12" stainless steel threaded rods.
- The double and triple stack kits come with 3/8" x 36" stainless steel threaded rods.
- A maximum spacing of 3' is recommended.

Item #	For 24" Bridge	Wt.
TCPZTRAP1	Single Level, 14 Snap-Ins or 12 Butterfly Hangers	8.00 lbs
TCPZTRAP2	Double Level, 28 Snap-Ins or 24 Butterfly Hangers	13.00 lbs
TCPZTRAP3	Triple Level, 42 Snap-Ins or 36 Butterfly Hangers	17.00 lbs



Base Plate Pipe Post Kit

Provides support for Grip Strut Channel and General Support Brackets. Each kit includes one 3 1/2" OD Pipe Post, four stainless steel anchor wedges and one pipe cap.

Item #		Wt.
TCPWPBP10	3 1/2" OD x 10'6" pipe	89.70 lbs
TCPWPBP12	3 1/2" OD x 12' pipe	101.40 lbs
TCPWPBP14	3 1/2" OD x 14' pipe	117.20 lbs
TCPWPBP16	3 1/2" OD x 16' pipe	132.90 lbs
TCP3CAP	Additional pipe cap, 3 1/2" OD	0.73 lbs



Tower Component needs. Call us. We have it. 800-927-2170.

Transmission Line Support

Base Shoe Plate

Base shoe assembly for 3 1/2" OD pipe.

Item #	Wt.
TCPBSP3	29.90 lbs



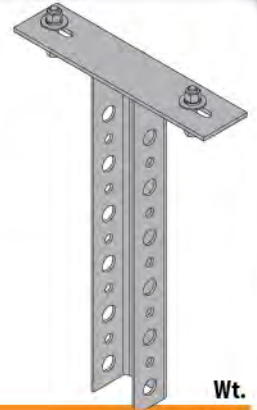
Vertical Waveguide Hanger Kit

Supports up to twelve (12) lines of coax below a Waveguide Bridge.

A maximum of 3' spacing is recommended.

All hardware is included.

Item #	Wt.
TCPVWGH	6.60 lbs

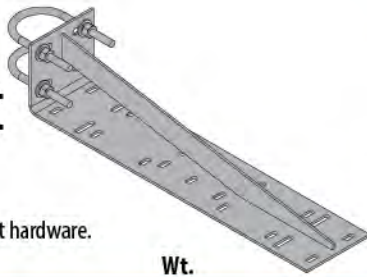


General Support Bracket Horse Head

Fits Pipe Posts having a 3 1/2" OD.

Each kit includes all required attachment hardware.

Item #	Support for (1) 2' Channel	Wt.
TCPHH24		16.90 lbs



Angle Adapter for Snap-In Hangers

Accepts one (1) Snap-In Hanger. No inserts to fumble with, simply attach and insert the Snap-In. Serrated teeth grab onto galvanized surfaces. One (1) 3/8" square head bolt included.

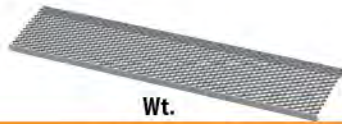
Sold in packages of 10.

Item #	Wt.
TCPAAU	4.20 lbs



Grip Strut Channel

Item #	Wt.
TCPSTRUT1210 1' x 10'	44.00 lbs
TCPSTRUT2410 2' x 10'	74.00 lbs



Angle Adapter for Butterfly Hangers

Includes one (1) 3/8" square head bolt, one (1) Fillister-slotted screw and one (1) lock washer.

Serrated teeth grab onto galvanized surfaces.

Sold in packages of 10.

Item #	Wt.
TCPAA38	4.80 lbs

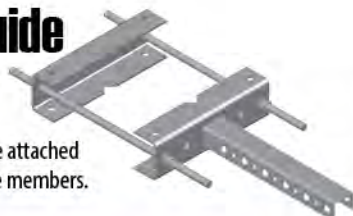


Universal Waveguide Standoff Kit

Allows up to twelve (12) lines of coax to be attached to the tower leg. Fits both round and angle members.

All hardware is included.

Item #	Wt.
TCPUWGS 1 1/2" to 5 1/8" OD leg, 2 1/2" to 4" angle leg	17.00 lbs
TCPUWGSU 1 1/2" to 10 3/4" OD leg, 2 1/2" to 8" angle leg	28.00 lbs



Universal Angle Adapter

Included insert allows for attachment of both Butterfly and Snap-In Hangers.

Sold in packages of 10.

Item #	Wt.
TCPAAUI	4.90 lbs



Now serving all your If you don't see what you need...

Transmission Line Support

Stackable Snap-In Hangers for Coax Support



Item #	10 per package	Wt.
TCPSSH12	1/2" Corrugated	.60 lbs
TCPSSH78	7/8" Corrugated	.70 lbs
TCPSSH114	1 1/4" Corrugated	.90 lbs
TCPSSH158	1 5/8" Corrugated & CommScope	1.10 lbs

Butterfly Hanger



Item #	10 per package	Wt.
TCPBH12	1/2" Corrugated & CommScope	0.90 lbs
TCPBH78	7/8" Corrugated & CommScope	1.10 lbs
TCPBH114	1 1/4" Corrugated	1.10 lbs
TCPBH158	1 5/8" Corrugated & CommScope	1.10 lbs
TCPBH214	2 1/4" Corrugated	1.20 lbs

Hanger Adaptor Grommet

- For use with snap ins and coax blocks
- Accepts various cable and wire sizes
- Kits of 10



Item #	Description	Kits per case
TCPSSHA38	1/2" adapter for use with 3/8" cable	50/case
TCPSSH787	7/8" insert for 7mm - 11mm	30/case
TCPSSH7811	7/8" insert for 11mm - 17mm	30/case
TCPSSH11411	1 1/4" insert for 11mm - 17mm	15/case
TCPSSH11417	1 1/4" insert for 17mm - 20mm	15/case

Hoisting Grips Pre-Laced



Item #		Wt.
TCPHG12PL	1/2" Corrugated & CommScope	0.30 lbs
TCPHG78PL	7/8" Corrugated & CommScope	0.40 lbs
TCPHG114PL	1 1/4" Corrugated	0.60 lbs
TCPHG158PL	1 5/8" Corrugated & CommScope	1.10 lbs

4" Boot Assembly (For Use with Entry Panel)



Includes one (1) 4" boot, one (1) cushion and two (2) clamps.
5" Boot Assembly available upon customer request.

Additional hole accommodations available upon request.

Item #		Wt.
TCBPA112	1 hole 1/2" Corrugated & CommScope	1.60 lbs
TCBPA178	1 hole 7/8" Corrugated	1.60 lbs
TCBPA114	1 hole 1 1/4" Corrugated	1.60 lbs
TCBPA158	1 hole 1 5/8" Corrugated & CommScope	1.60 lbs
TCBPA214	1 hole 2 1/4" Corrugated	1.60 lbs

4" Cushion Inserts

- Designed for use in entry port boots
- Durable design and construction



Item #	Size
TCPCI138	1 hole for 3/8"
TCPCI338	3 hole for 3/8"
TCPCI112	1 hole for 1/2"
TCPCI212	2 hole for 1/2"
TCPCI312	3 hole for 1/2"
TCPCI412	4 hole for 1/2"
TCPCI912	9 hole for 1/2"
TCPCI178	1 hole for 7/8"
TCPCI278	2 hole for 7/8"
TCPCI378	3 hole for 7/8"
TCPCI478	4 hole for 7/8"
TCPCI1114	1 hole for 1 1/4"
TCPCI1158	1 hole for 1 5/8"
TCPCIB	Solid insert. No hole
TCPCI158	1 hole for 5/8"
TCPCI3PTCPC	3 hole 2 1/2" holes and 1 PC hole

Tower Component needs. Call us. We have it. 800-927-2170.

Transmission Line Support

Tower Standoff

for Snap-In Hanger

- 3/4" hole to accommodate all types of Snap-In Hangers.
- Stainless Steel Round Member Clip also included (except TCPEUS38).

Sold in Quantities of 10.

Item #	Member Diameter
TCPEUS38	Round Member Clip not inc.
TCPEUS12	1" - 2" OD
TCPEUS23	2" - 3" OD
TCPEUS34	3" - 4" OD
TCPEUS45	4" - 5" OD
TCPEUS56	5" - 6" OD



Tower Standoff Kit

- Versatile means to enable hangers to be mounted to the Round Member of a structure.
- Standard design has a threaded hole to accommodate a 3/8" bolt or Threaded Rod, ensuring effective installation.
- Supplied with screws, lock washers and Stainless Steel Round Member Clip (except TCPS38).

Item #	Member Diameter	Qty
TCPS38	Round Member Clip not included	10
TCPS3812	1" - 2" OD	10
TCPS3823	2" - 3" OD	10
TCPS3834	3" - 4" OD	10
TCPS3845	4" - 5" OD	10
TCPS3856	5" - 6" OD	10



Universal Standoff Adapter Kit

- Enables hangers to be mounted to 1" OD or larger members.
- Remove the 3/8" threaded insert to accept Snap-in Hangers.
- Includes screws and lock washers along with insert.
- Slotted to accept Round Member Adapters or banding strap for mounting on any size Round Tower Member.
- Stainless Steel Round Member Clip also included (except TCPEUS38U).

Sold in packs of 10.

Item #	Member Diameter
TCPEUS38U	Round Member Clip not inc.
TCPEUS12U	1" - 2" OD
TCPEUS23U	2" - 3" OD
TCPEUS34U	3" - 4" OD
TCPEUS45U	4" - 5" OD
TCPEUS56U	5" - 6" OD



Universal Snap-In Hanger

- Circular design for the best fit on all brands of coax
- Superior cable retention and has no sharp edges.

Item #	Sold 10 per package	Wt
TCPSI12	1/2" Corrugated & CommScope	0.60
TCPSI78	7/8" Corrugated	0.70
TCPSI114	1 1/4" Corrugated & CommScope	0.90
TCPSI158	1 5/8" Corrugated & CommScope	1.10



Coax Block

- Supports 2 coax runs per block
 - Equal pressure transfer around cable for minimal stress
- Sold 10 per package

Item #	Use with size of Corrugated Coax
TCP12	1/2"
TCP78	7/8"
TCP114	1 1/4"
TCP158	1 5/8"



Single Run Coax Block

- Supports a single coax run
 - Equal pressure transfer around cable for minimal stress
- Sold 10 per package

Item #	Use with size of Corrugated Coax
TCP121H	1/2"
TCP781H	7/8"



Coax Block Hardware Kits

- Made of 3/8" Stainless Steel

Kit includes: •10 Threaded rods •20 Flat Washers •20 Lock Washers •30 Nuts

Item #	Description
TCPS5384	3/8" Single Stack Hardware for Single 1/2" and 7/8" Mini Blocks
TCPS5385	3/8" Double Stack Hardware for 1/2" and 7/8" mini blocks or 3/8" single stack hardware for 1 1/4" and 1 5/8" mini blocks. Rods 5" length.
TCPS5386	3/8" Double Stack Hardware for 1/2" and 7/8" mini blocks or 3/8" single stack hardware for 1 1/4" and 1 5/8" mini blocks. Rods 6" length.
TCPS5388	3/8" Triple Stack Hardware for 1/2" and 7/8" mini blocks or 3/8" double stack hardware for 1 1/4" and 1 5/8" mini blocks.
TCPS53810	3/8" Triple Stack Hardware for Triple 1 1/4" and 1 5/8" mini blocks. Rods 10" length.
TCPS53812	3/8" Triple Stack Hardware for Triple 1 1/4" and 1 5/8" mini blocks. Rods 12" length.



Now serving all your If you don't see what you need...

Transmission Line Support

4" Entry Panel

- Aluminum, powder-coated
- Provide a rugged, neat and clean method of allowing transmission line entry into a building.
- Includes all wall mounting hardware and sealing caps to seal all holes.



Item #		Wt.
TCPEP2X3	6 hole (2 x 3)	5.80 lbs
TCPEP2X4	8 hole (2 x 4)	6.10 lbs
TCPEP3X4	12 hole (3 x 4)	10.00 lbs

Cable Boot Plugs

Used for filling unused spaces in multi-hole cushions.

Sold in Quantities of 5.



Item #	Size
TCPCBP12	To suit 1/2" Foam Coax hole
TCPCBP38	To suit 3/8" Foam Coax hole
TCPCBP78	To suit 7/8" Foam Coax hole
TCPCBP114	To suit 1 1/4" Foam Coax hole
TCPCBP158	To suit 1 5/8" Foam Coax hole

Snap-In Adapter Block

Designed to accommodate a Snap-In Hanger on each side of the block.

Can be attached to the tower with our Standard Angle Adapters or Tower Standoffs.



Item #	Qty
TCPSA38	10

Deluxe Weather-Proofing Kit

Includes five (5) rolls of our acclaimed M2000 mastic tape 2 1/2" x 2', two (2) rolls of 3M Super 33+ electrical tape 3/4" x 66' and one (1) roll of Plymough Premium electrical tape 2" x 20'.



Item #	Wt.
TCPWPKU	3.40 lbs

3M Scotch® Vinyl Electrical Tape

Professional Grade

- 3/4" X 66' Roll
- Super strong adhesion in a wide range of temps
- Abrasion and weather resistant
- Stretches and conforms to virtually any shape that requires color coded insulation



Item #	Color
MMM10851	Green
MMM10810	Red
MMM10844	Yellow
MMM10885	Brown
MMM10869	Orange
MMM10836	Blue
MMM10828	White
MMM11271	Violet
MMM00072	Gray



Snap-In Tower Standoff

- Stainless Steel
- Allows Snap-In Hangers to be mounted to Round Support Members
- Designed with 3/4" pre-punched holes
- Sold in kits of 10



Item #	Fits Round Member Size
TCPSA12	1"-2"
TCPSA23	2"-3"
TCPSA34	3"-4"
TCPSA45	4"-5"
TCPSA56	5"-6"



Mini Cluster Support Bracket

- Provides three 3/4" diameter holes for the attachment of Snap-In Hangers and as an added bonus, three 3/8" holes for Butterfly Hangers or Cable Blocks.
- Purchase Angle Adapters or Round Member Adapters separately.



Item #	Qty
TCPCSBS	10

Tower Component needs.

Call us. We have it. 800-927-2170.

Transmission Line Support

Snap-In Adapter Bracket



- Used in conjunction with banding and is used on large round members, water towers, or outside of a monopole.
- Use multiple brackets for the number of runs required for your system.
- Galvanized steel bracket supports both Standard Hangers and Snap-In Hangers.

Item #	Number of Lines of Coax	Qty
TCPAB6	Six Lines of Coax	10
TCPAB9	Nine Lines of Coax	10

Cluster Support Bracket



- Versatile means to support multiple runs of corrugated cable in virtually any application.
- Oval design allows corrugated cables to be run inside and outside of the bracket, maximizing capacity.
- 3/4" holes to accommodate Snap-In Hangers and 1/2" holes for Butterfly Hangers using standard 3/8" hardware.
- Supports seven runs of corrugated cables.

Sold in units of one, U-bolt hardware sold separately.

Item #	Description	Qty
TCPCSBO	Bracket Only (hardware not included)	1
TCPCS238	Bracket and U-bolt for 2- 3/8" round member attachment	1

Round Member Adapter



- Stainless steel
- Used to mount hangers, clamp heads, and Standoff Brackets to round members.

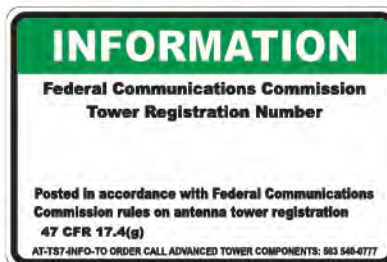
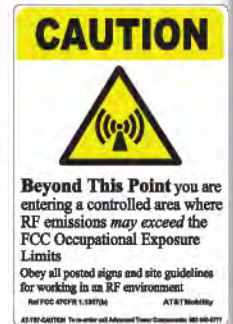
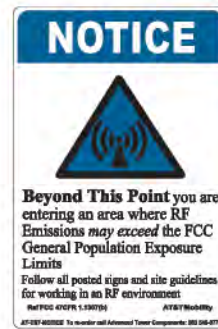
Sold 10 per package.

Item #	Description	Wt.
TCPRMA200	Less than 2" OD pipe	0.60 lbs
TCPRMA300	Less than 3" OD pipe	0.60 lbs
TCPRMA400	Less than 4" OD pipe	0.81 lbs
TCPRMA500	Less than 5" OD pipe	0.83 lbs
TCPRMA600	Less than 6" OD pipe	0.94 lbs
TCPRMA700	Less than 7" OD pipe	1.07 lbs

Location Warning Signs

- Custom signs for site safety and identification.
- Provide site specific information when ordering.

Item #	Description and Size
TCP7NOTICE	Notice Sign 12" x 18" (blue)
TCP7WARNING	Warning Sign 12" x 18" (Red)
TCP7CAUTION	Caution Sign 12" x 18" (Yellow)
TCP7TCAUTION	Tower Caution Sign 12" x 18" (Yellow)
TCP7FCC	FCC Sign 12" x 18" Tower Registration FCC# (Green)
TCP7FCCSIGNKIT	FCC Sign Kit with Blank 12" x 18" Tower Registration FCC# Sign (Green) and 5 of each number 0-9



Now serving all your If you don't see what you need...

JMA-PPC Materials

Tool Kit, Corrugated 50 OHM, Complete

Products Included:

- HCG-CC - Compression Tool for 1/2", 7/8", 1 5/8" CC connectors
-Rigid Compression Gun -2 Batteries -Battery Charger
 - HCG-FRAMESET-12 - 1/2" Press Frame with Inserts for Rigid Compression Gun
 - HCG-FRAMESET-78 - 7/8" Press Frame with Inserts for Rigid Compression Gun
 - HCG-FRAMESET-158 - 1 5/8" Press Frame with Inserts for Rigid Compression Gun
 - TQ-114-F18
 - SP-1/2-UNIVD - 1/2" Prep Tool, SuperFlex Cable
 - SP-1/2-LDF4D - 1/2" Prep Tool, Annular Cable
 - SP-78
 - SP-158 - 1 5/8" Prep Tool
 - RDCUTTER
 - RDCUTTER-S
 - GATOR - Center Conductor Prep Tool, CablePrep
 - HCG-INSERTA-1/2 : 1/2" Insert A for HCG-FRAMESET-1/2 (DIN)
- (All items may not be as shown)

Item

TCPKITCCFULL



716 DIN Female Bulkhead Port Seal (cut to fit port)

TCPWPSDF



1/2" Annular/Hardline, or 540 Smoothwall WPS BOOT

TCPWPS4A



3/8" WPS Boot

TCPWPS5



1 5/8" WPS Boot with 1/2" Adapter

TCPWPS7



1/2" Connector, 50 OHM, DIN Male, Flexible Cable, Gen2

TCPUXPDM12S



1/2" Connector, 50 OHM, DIN Male, Corrugated Cable, Gen2

TCPUXPDM12



1/2" Connector, 50 OHM, DIN Female, Corrugated Cable, Gen2

TCPUXPDF12



1/2" Connector, 50 OHM, N Male, Corrugated/Annular Gen2

TCPUXPNM12



3/8" Connector, 50 OHM, DIN Female, 3/8" Corrugated Cable, Gen2

TCPUXPDF78



1/2" Connector, 50 OHM, N Male, Flexible Cable, Gen2

TCPUXPNM12S



1/2" Connector, 50 OHM, DIN RightAngle, Flexible Cable, Gen2

TCPUXPDRA12S



1/2" Connector, 50 OHM, DIN RightAngle, Corrugated/Annular Gen2

TCPUXPDRA12



1 5/8" Connector, 50 OHM, DIN Female, Corrugated/Annular Gen2

TCPUXPDF158



Tower Component needs. Call us. We have it. 800-927-2170.

Grounding Accessories

Click-On Coax Grounding Kit #6 Copper Wire

Simply click the ratcheting buckle shut, no coiling tool is necessary. Each kit includes 5' of #6 copper wire and an unattached universal slotted $\frac{3}{8}$ " two hole lug that can fit holes spaced from $\frac{3}{8}$ " to 1" with hardware. One roll of premium butyl tape and one roll of electrical tape also included.



Item #	Description	Wt.
TCPGK12	$\frac{1}{2}$ " Cable	1.40 lbs
TCPGK78	$\frac{3}{4}$ " Cable	1.40 lbs
TCPGK114	1 $\frac{1}{4}$ " Cable	1.40 lbs
TCPGK158	1 $\frac{5}{8}$ " Cable	1.40 lbs
TCPGK214	2 $\frac{1}{4}$ " Cable	1.60 lbs

Universal Tinned Ground Kit

- Installs on $\frac{1}{2}$ " to 3" Coax
- Markings allow for easy install
- Kit includes; unattached lug, hardware, butyl and electrical tape



Item #	Description	Qty
TCPUGKA	$\frac{1}{2}$ " - 2- $\frac{1}{4}$ " tinned. 5' unattached lead	20/case

Lightning Rod

Available in $\frac{5}{8}$ " or $\frac{3}{4}$ " diameter with a 2" threaded bottom. Made of Copper-clad steel

Each kit includes one (1) Lightning Rod, two (2) Hex Nuts, two (2) Flat Washers and two (2) Lock Washers.

Item #	Rod Size	Wt.
TCPLR5848	$\frac{5}{8}$ " x 4'	4.70 lbs
TCPLR5860	$\frac{5}{8}$ " x 5'	5.00 lbs
TCPLR5872	$\frac{5}{8}$ " x 6'	5.50 lbs
TCPLR5896	$\frac{5}{8}$ " x 8'	7.20 lbs
TCPLR3472	$\frac{3}{4}$ " x 6'	6.50 lbs
TCPLR3496	$\frac{3}{4}$ " x 8'	13.40 lbs
TCPLR34120	$\frac{3}{4}$ " x 10'	16.90 lbs

Ground Rod Clamp Copper Alloy or Galvanized Steel

Provides a method of connecting the ground wire to the Ground Rod or can be used to connect ground wire to a Lightning Rod.



Item #	Size and Material Type	Wt.
TCPC30097001	$\frac{5}{8}$ ", copper alloy	0.20 lbs
TCPC30097002	$\frac{5}{8}$ ", galvanized steel	0.20 lbs
TCPC30097010	$\frac{5}{8}$ " - $\frac{3}{4}$ ", (two horizontal #6-2/0 wire) copper alloy	0.50 lbs

Grounding Rod

Copper-Clad Steel

Ground Rods come in standard $\frac{5}{8}$ " and $\frac{3}{4}$ " diameters.

Item #	Size	Wt.
TCGR5896	$\frac{5}{8}$ " x 8' Ground Rod, Copper-Clad steel	8.10 lbs

Buss Bars

- Universal hole patterns
- Capable of accepting one-hole, two-hole and two-hole universal ground lugs



Copper Buss Bars

Item #	Size
TCPBB14210	$\frac{1}{4}$ " x 2" x 10"
TCPBB14412	$\frac{1}{4}$ " x 4" x 12"
TCPBB14420	$\frac{1}{4}$ " x 4" x 20"

Tinned Solid Copper Buss Bar

Item #	Size
TCPBB14210T	$\frac{1}{4}$ " x 2" x 10"
TCPBB14412T	$\frac{1}{4}$ " x 4" x 12"
TCPBB14420T	$\frac{1}{4}$ " x 4" x 20"

Galvanized Buss Bars

Item #	Size
MWUGBB14210	$\frac{1}{4}$ " x 2" x 10"

Buss Bar Mounting Kits

- All hardware necessary for each mounting application

Item #	Kit Type
MWUSMK	Shelter Kit
MWUTMK	Tower Kit
MWUUMK	Universal Kit



Now serving all your If you don't see what you need...

Grounding Accessories

thermOweld®

Top Feed Cable to Vertical Pipe (Up)



	Clamp	Weld Metal	Part No.
#2 to 2"-4"	B-106-32	90	THEM7285
#2 solid to 2"-4"	B-106-32	90	THEM7285S

Bottom Feed Cable to Vertical Pipe (Down)



	Clamp	Weld Metal	Part No.
#2 to 1 1/2"-4", 45°	B-106-32	45	THEM9233
#2 solid to 1 1/2"-4", 45°	B-106-32	45	THEM9233S
#2 to 4"-6", 45°	B-106-32*	45	THEM2480
#2 solid to 4"-6", 45°	B-106-32*	45	THEM2480S
#2/0 solid to 2"-4", 45°	B-106-32	90	THEM8833
#4/0 solid to 2"-4", 45°	B-106-32	115	THEM9021
#2 solid to 1 1/2"-4"	B-106-32	45	THEM6199S
#2/0 to 1 1/4"-3 1/2"	B-106-32	90	THEM5495
#4/0 to 1 1/4"-3 1/2"	B-106-32	115	THEM6622

*20" chain extension required for clamp Part No. 40-106-27.

Cable to Cable Parallel Splice



	Clamp	Weld Metal	Part No.
#2 solid to #2 solid	B-106	65	THEM1313S
#2/0 to #2/0	B-106	115	THEM1322
#2/0 to #2 solid	B-106	90	THEM8289
#4/0 to #2 solid	B-106	150	THEM6805
#4/0 to #4/0	B-106	200	THEM1331

Horizontal End to End



	Clamp	Weld Metal	Part No.
#2 to #2	B-106	32	THEM203
#2 solid to #2 solid	B-106	32	THEM203S
#2/0 to #2/0	B-106	65	THEM206
#4/0 to #4/0	B-106	90	THEM208

The thermOweld® grounding connection system is a simple, efficient and permanent way to fuse copper-to-copper or copper-to-steel, without the need of an outside power source. thermOweld® delivers an excellent bond with almost no penetration of pipe wall and less heat effect on pipe. With softer slag, it makes for easier cleaning and increases mold life up to 50%. thermOweld®'s sure starting powder assures no misfire.

**We offer the full Thermoweld® line of products.
Call us for your special requests.**

Run and Tap or 3-Way



	Clamp	Weld Metal	Part No.
#2 solid to #2/0	B-106	45	THEM5985
#2 solid to #2 solid	B-106	45	THEM223S
#2/0 to #2/0	B-106	90	THEM232
#4/0 to #2 solid	B-106	90	THEM5348
#4/0 to #4/0	B-106	150	THEM241

Horizontal Cable to Horizontal Bus Bar Weld



	Clamp	Weld Metal	Part No.
#2 Solid to 1/4"x1" Min. Bus	B-106	65	THEM5415S
#2 Stranded to 1/4"x1" Min. Bus	B-106	65	THEM5415
#2/0 to 1/4"x1 1/2" Min. Bus	B-106	90	THEM1652
#4/0 to 1/4"	B-106	90	THEM1654

Cable to Top of Ground Rod



	Clamp	Weld Metal	Part No.
#2 to 5/8"	B-106	65	THEM503
#2 solid to 5/8"	B-106	65	THEM503S
#2/0 to 5/8"	B-106	90	THEM506
#4/0 to 5/8"	B-106	90	THEM508

Through Cable to Top of Ground Rod



	Clamp	Weld Metal	Part No.
#2 to 5/8"	B-106	90	THEM545
#2 solid to 5/8"	B-106	90	THEM545S
#2/0 to 5/8"	B-106	115	THEM548
#2 solid to 3/4"	B-106	90	THEM556S
#4/0 to 5/8"	B-106	115	THEM550

Tower Component needs. Call us. We have it. 800-927-2170.

Grounding Accessories



Cable to Steel Surface Horizontal

	Clamp	Weld Metal	Part No.
#2/0 to flat	B-106	90	THEM645
#2 to flat	B-106	45	THEM630
#2 solid to flat	B-106	45	THEM630S
#4/0 to flat	B-106	115	THEM647



Vertical Cable Drop to Vertical Steel Surface

	Clamp	Weld Metal	Part No.
#2 to Vert Steel	B-106	65	THEM2781
#2 solid to Vert Steel	B-106	65	THEM2781S
#2/0 to Vert Steel	B-106	115	THEM2540
#4/0 to Vert Steel	B-106	150	THEM8718



Angular Cable Drop to Vertical Steel Surface

	Clamp	Weld Metal	Part No.
#2 to Vert Steel	B-106	45	THEM588
#2 solid to Vert Steel	B-106	45	THEM588S
#2/0 to Vert Steel	B-106	90	THEM591
#4/0 to Vert Steel	B-106	115	THEM593



Overhead Vertical Tap Cable to Vertical Steel Surface

	Clamp	Weld Metal	Part No.
#2 to Vert Steel	B-106	65	THEM1638
#2 solid to Vert Steel	B-106	65	THEM1638S
#2/0 to Vert Steel	B-106	150	THEM1641

Flint Gun and Brushes



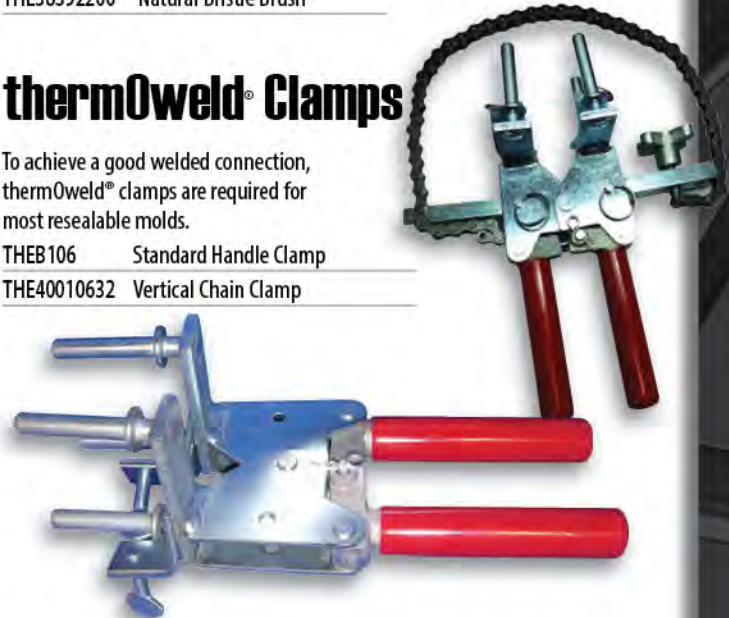
Used to ignite thermOweld® weld metal (shots) and for cleaning molds.

THE38030900	Flint Gun
THE38030901	Replacement Flints
THE38392200	Natural Bristle Brush

thermOweld® Clamps

To achieve a good welded connection, thermOweld® clamps are required for most resealable molds.

THEB106	Standard Handle Clamp
THE40010632	Vertical Chain Clamp



thermOweld Weld Metal

- Weld metal is packaged in moisture-resistant plastic cartridges with tight fitting caps. These cartridges and the necessary steel discs are then packaged in boxes that are shrink wrapped to ensure the weld metal will arrive dry, and ready for a positive ignition every time.

- Weld metal (powder) is packed in moisture-resistant plastic cartridges with tight fitting caps. Size and weight (in grams) are marked on each individual cartridge.
- Steel discs and thermOweld® plastic cartridges are packed in sealed plastic bags inside a box. Copper to copper to steel welds.



	Quantity	Cartridge
THE32	10/box	#32
THE45	20/box	#45
THE65	20/box	#65
THE90	10/box	#90
THE115	10/box	#115
THE150	10/box	#150
THE200	10/box	#200

Now serving all your If you don't see what you need...

Grounding Accessories

2-Hole Wire Lugs with Inspection Window

- Long barrel, seamless, color marked and UL Approved



Item #	Wire Gauge	Hole Size	Hole Spacing	No. of Holes
TCP638	#6	3/8"		1
TCP614	#6	1-4"		1
TCP6214	#6	1-4"	5/8"	2
TCP6238U	#6	UNIVERSAL	3/4-1"	2
TCP62381	#6	3/8"	1"	2
TCP62538	#2 SOLID	3/8"		1
TCP2S214	#2 SOLID	1-4"	5/8"	2
TCP2S238U	#2 SOLID	UNIVERSAL	3/4-1"	2
TCP2S2381	#2 SOLID	3/8"	1"	2
TCP238	#2	3/8"		1
TCP2214	#2	1-4"	5/8"	2
TCP2238U	#2	UNIVERSAL	3/4-1"	2
TCP22381	#2	3/8"	1"	2

Ground Wire

- Sold in 500 ft Spools

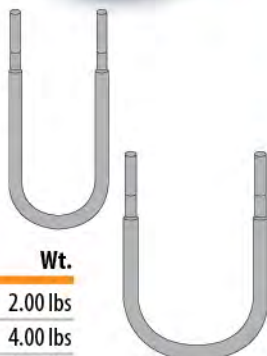
Item #	Size
TCPGW2G	#2THHN, Green
TCPGW2T	#2 Solid Tinned
TCPGW6	#6THHN, Green, 250 ft spool



Flexible Gate Jumper

24" long Gate Jumpers can be used with Universal Pipe Clamps (sold separately) or can be exothermically welded to gates/fences.

Item #	Description	Wt.
TCPC30004001	24" Gate Jumper #2 Solid	2.00 lbs
TCPC30004002	24" Gate Jumper 2/0	4.00 lbs
TCPC30004003	24" Gate Jumper 4/0	4.50 lbs



thermOweld™ Starter Kit

• THEB106	Standard Handle Clamp
• THE40010632	Vertical Chain Clamp
• THE38030900	Flint Gun
• THE38392200	Natural Bristle Mold Brush
• THE38412900	Packing Material
• THE45	#45 Weld Metal
• THE65	#65 Weld Metal
• THE90	#90 Weld Metal
• THEM5415S	#2 Solid to 1/4" x 1-1/2"
• THEM545S	#2 Solid to 3/8" Ground
• THEM1313S	#2 Solid to #2 Solid Cable
• THEM223S	#2 Solid to #2 Solid Run
• THEM9233S	#2 Solid to 1-1/2" - 4" Bottom
• THEM7285S	#2 Solid to 2"-4" Top
• THEM630S	#2 Solid to flat cable to

Item #

THESTARTERKIT



Tower Component needs. Call us. We have it. 800-927-2170.

Cable & Hardware Accessories



Guy Anchors

Item #	(A) Anchor Length	(B) Anchor Head Hole Size	Holes in Anchor	(C) Plate Thickness	(D) Rod Diameter	Guy Wire Size (EHS)	Turnbuckle Size	Anchor Capacity
TCPC30129026	8'-2 7/8"	3/4"	5	1/2"	1 1/4"	3/16" to 3/8"	1/2" to 3/4"	49.1 k
TCPC30129032	8'-2 7/8"	3/4"	7	1/2"	1 1/4"	3/16" to 3/8"	1/2" to 3/4"	49.1 k
TCPC30129027	14'-2 7/8"	3/4"	5	1/2"	1 1/4"	3/16" to 3/8"	1/2" to 3/4"	49.1 k
TCPC30129033	14'-2 7/8"	3/4"	7	1/2"	1 1/4"	3/16" to 3/8"	1/2" to 3/4"	49.1 k
TCPC30129001	13'-9 3/4"	1 1/16"	5	3/4"	1 3/4"	3/8" to 5/8"	3/4" to 1"	96 k
TCPC30129050	20'-7 3/4"	1 1/16"	5	3/4"	1 3/4"	3/8" to 5/8"	3/4" to 1"	96 k
TCPC30129003	13'-9 3/4"	1 1/4"	5	1"	2"	1/2" to 3/4"	7/8" to 1 1/4"	125 k
TCPC30129051	20'-7 3/4"	1 1/4"	5	1"	2"	1/2" to 3/4"	7/8" to 1 1/4"	125 k
TCPC30129005	13'-9 3/4"	1 1/16"	7	3/4"	2"	3/8" to 5/8"	3/4" to 1"	125 k
TCPC30129052	20'-7 3/4"	1 1/16"	7	3/4"	2"	3/8" to 5/8"	3/4" to 1"	125 k
TCPC30129007	13'-10"	1 1/4"	7	1"	2 1/4"	1/2" to 3/4"	7/8" to 1 1/4"	159 k
TCPC30129053	20'-8"	1 1/4"	7	1"	2 1/4"	1/2" to 3/4"	7/8" to 1 1/4"	159 k
TCPC30129009	13'-10"	1 1/16"	9	3/4"	2 1/4"	3/8" to 5/8"	3/4" to 1"	159 k
TCPC30129054	20'-8"	1 1/16"	9	3/4"	2 1/4"	3/8" to 5/8"	3/4" to 1"	159 k
TCPC30129011	13'-10"	1 1/4"	9	1"	2 1/2"	1/2" to 3/4"	7/8" to 1 1/4"	196 k
TCPC30129055	20'-8"	1 1/4"	9	1"	2 1/2"	1/2" to 3/4"	7/8" to 1 1/4"	196 k
TCPC30129013	13'-10"	1 1/16"	11	3/4"	2 1/2"	3/8" to 5/8"	3/4" to 1"	196 k
TCPC30129056	20'-8"	1 1/16"	11	3/4"	2 1/2"	3/8" to 5/8"	3/4" to 1"	196 k
TCPC30129015	13'-10"	1 1/4"	11	1"	2 3/4"	1/2" to 3/4"	7/8" to 1 1/4"	237 k
TCPC30129057	20'-8"	1 1/4"	11	1"	2 3/4"	1/2" to 3/4"	7/8" to 1 1/4"	237 k

Guy Cable Hardware Kit Galvanized ASTM A153

Designed for use with E.H.S. guy strand and appropriate for a specific guy size.

Kit includes all of the hardware components, except guy strand, required for a standard single guy strand assembly:

- 1 - Jaw-Eye Turnbuckle
- 1 - Screw Pin Anchor Shackle
- 2 - Heavy Thimbles
- 2 - Dead-End Grips (preforms)
- 2 - Dead-End Sleeves (ice-clips).

Item #	Fits Guy Strand Diameter	Includes Jaw-Eye Turnbuckle Throat Size	Includes Screw Pin Anchor Shackle Throat Size	Wt.
TCPC40100020	3/16"	5/8"	1 1/16"	5.20 lbs
TCPC40100019	1/4"	5/8"	1 1/16"	4.90 lbs
TCPC40100010	5/16"	5/8"	1 1/16"	6.00 lbs
TCPC40100011	3/8"	1 5/16"	1 1/16"	11.20 lbs
TCPC40100012	7/16"	1 5/16"	1 1/16"	12.40 lbs
TCPC40100013	1/2"	1 1/8"	1 7/16"	20.00 lbs
TCPC40100014	9/16"	1 3/16"	1 7/16"	26.80 lbs
TCPC40100015	5/8"	1 3/16"	1 7/16"	31.80 lbs
TCPC40100030	1 1/16"	1 3/4"	1 11/16"	50.00 lbs
TCPC40100016	3/4"	1 3/4"	1 11/16"	51.00 lbs
TCPC40100017	7/8"	2 1/16"	1 11/16"	70.30 lbs
TCPC40100018	1"	2 1/16"	1 11/16"	94.20 lbs



Now serving all your If you don't see what you need...

Cable & Hardware Accessories



the **Crosby** group

Crosby® Jaw & Eye Turnbuckles

Thread Dia. & Take Up	WLL (lbs)	HG-227 Galvanized
1/4" x 4"	500	CRO1031877
5/16" x 4 1/2"	800	CRO1031895
3/8" x 6"	1,200	CRO1031911
1/2" x 6"	2,200	CRO1031939
1/2" x 12"	2,200	CRO1031975
5/8" x 6"	3,500	CRO1031993
5/8" x 12"	3,500	CRO1032037
3/4" x 6"	5,200	CRO1032055
3/4" x 12"	5,200	CRO1032091
3/4" x 18"	5,200	CRO1032117
7/8" x 12"	7,200	CRO1032135
1" x 6"	10,000	CRO1032171
1" x 12"	10,000	CRO1032199
1" x 18"	10,000	CRO1032215
1" x 24"	10,000	CRO1032233
1 1/4" x 12"	15,200	CRO1032251
1 1/4" x 18"	15,200	CRO1032279

Import Jaw & Eye Turnbuckles

Thread Dia. & Take Up	WLL (lbs)	Import Galvanized
1/4" x 4"	500	WEI144TBJEG
5/16" x 4 1/2"	800	WEI516412BJEG
3/8" x 6"	1,200	WEI386BJEG
1/2" x 6"	2,200	WEI126TBJEG
1/2" x 12"	2,200	WEI1212TBJEG
5/8" x 6"	3,500	WEI586TBJEG
5/8" x 12"	3,500	WEI5812TBJEG
3/4" x 6"	5,200	WEI346TBJEG
3/4" x 12"	5,200	WEI3412TBJEG
3/4" x 18"	5,200	WEI3418TBJEG
7/8" x 12"	7,200	WEI7812TBJEG
1" x 6"	10,000	WEI16TBJEG
1" x 12"	10,000	WEI112TBJEG
1" x 18"	10,000	WEI118TBJEG
1" x 24"	10,000	WEI124TBJEG
1 1/4" x 12"	15,200	WEI11412TBJEG
1 1/4" x 18"	15,200	WEI11418TBJEG



the **Crosby** group

Crosby® Jaw & Jaw Turnbuckles

Thread Dia. & Take Up	WLL (lbs)	HG-228 Galvanized
1/4" x 4"	500	CRO1032493
5/16" x 4 1/2"	800	CRO1032518
3/8" x 6"	1,200	CRO1032536
1/2" x 6"	2,200	CRO1032554
1/2" x 12"	2,200	CRO1032590
5/8" x 6"	3,500	CRO1032616
5/8" x 12"	3,500	CRO1032652
3/4" x 6"	5,200	CRO1032670
3/4" x 12"	5,200	CRO1032714
3/4" x 18"	5,200	CRO1032732
7/8" x 12"	7,200	CRO1032750
1" x 6"	10,000	CRO1032796
1" x 12"	10,000	CRO1032812
1" x 18"	10,000	CRO1032830
1" x 24"	10,000	CRO1032858
1 1/4" x 12"	15,200	CRO1032876
1 1/4" x 18"	15,200	CRO1032894

Import Jaw & Jaw Turnbuckles

Thread Dia. & Take Up	WLL (lbs)	Import Galvanized
1/4" x 4"	500	WEI144TBJJG
5/16" x 4 1/2"	800	WEI516412BJJG
3/8" x 6"	1,200	WEI386BJJG
1/2" x 6"	2,200	WEI126TBJJG
1/2" x 12"	2,200	WEI1212TBJJG
5/8" x 6"	3,500	WEI586TBJJG
5/8" x 12"	3,500	WEI5812TBJJG
3/4" x 6"	5,200	WEI346TBJJG
3/4" x 12"	5,200	WEI3412TBJJG
3/4" x 18"	5,200	WEI3418TBJJG
7/8" x 12"	7,200	WEI7812TBJJG
1" x 6"	10,000	WEI16TBJJG
1" x 12"	10,000	WEI112TBJJG
1" x 18"	10,000	WEI118TBJJG
1" x 24"	10,000	WEI124TBJJG
1 1/4" x 12"	15,200	WEI11412TBJJG
1 1/4" x 18"	15,200	WEI11418TBJJG



the **Crosby** group

Crosby® Eye & Eye Turnbuckles

Thread Dia. & Take Up	WLL (lbs)	HG-226 Galvanized
1/4" x 4"	500	CRO1031252
5/16" x 4 1/2"	800	CRO1031270
3/8" x 6"	1,200	CRO1031298
1/2" x 6"	2,200	CRO1031314
1/2" x 12"	2,200	CRO1031350
5/8" x 6"	3,500	CRO1031378
5/8" x 12"	3,500	CRO1031412
3/4" x 6"	5,200	CRO1031430
3/4" x 12"	5,200	CRO1031476
3/4" x 18"	5,200	CRO1031494
7/8" x 12"	7,200	CRO1031519
1" x 6"	10,000	CRO1031555
1" x 12"	10,000	CRO1031573
1" x 18"	10,000	CRO1031591
1" x 24"	10,000	CRO1031617
1 1/4" x 12"	15,200	CRO1031635
1 1/4" x 18"	15,200	CRO1031653

Import Eye & Eye Turnbuckles

Thread Dia. & Take Up	WLL (lbs)	Import Galvanized
1/4" x 4"	500	WEI144TBEEG
5/16" x 4 1/2"	800	WEI516412BEEG
3/8" x 6"	1,200	WEI386BEEG
1/2" x 6"	2,200	WEI126TBEEG
1/2" x 12"	2,200	WEI1212TBEEG
5/8" x 6"	3,500	WEI586TBEEG
5/8" x 12"	3,500	WEI5812TBEEG
3/4" x 6"	5,200	WEI346TBEEG
3/4" x 12"	5,200	WEI3412TBEEG
3/4" x 18"	5,200	WEI3418TBEEG
7/8" x 12"	7,200	WEI7812TBEEG
1" x 6"	10,000	WEI16TBEEG
1" x 12"	10,000	WEI112TBEEG
1" x 18"	10,000	WEI118TBEEG
1" x 24"	10,000	WEI124TBEEG
1 1/4" x 12"	15,200	WEI11412TBEEG
1 1/4" x 18"	15,200	WEI11418TBEEG

Tower Component needs. Call us. We have it. 800-927-2170.

Cable & Hardware Accessories

Galvanized Dead-End Sleeve (Ice-Clips)

- Sleeves are galvanized in accordance with ASTM A153

For use with
Guy Strand Size

PREGC65136	1/4"
PREGC65128	5/16"
PREGC65264	3/8"
PREGC65265	7/16"
PREGC65266	1/2"
PREGC65267	9/16"
PREGC65268	5/8"
PREGC65269	3/4"



Dead-End Grips

- Used with a thimble and turnbuckle to terminate a guying connection
- Alternative to using traditional guy wire and cable clip type terminations.
- Hot-dip galvanized
- Galvanized in accordance with ASTM A153.

Dead-End Diameter

PREBG2142	3/16"
PREBG2144	1/4"
PREBG2146	5/16"
PREBG2147	3/8"
PREBG2148	7/16"
PREBG2115	1/2"
PREBG2116	9/16"
PREBG2111	5/8"
PREBG2112	3/4"



Heavy Duty Galvanized Thimbles

Rope Dia.

MWUI1037639	1/4"
MWUI1037657	5/16"
MWUI1037675	3/8"
MWUI1037693	7/16"
MWUI1037719	1/2" - 9/16"
MWUI1037755	5/8"
MWUI1037773	3/4"
MWUI1037791	7/8"
MWUI1037817	1"



Crosby® Forged Base Cable Clips G-450

Not for load carrying.

	Size
CRO1010015	1/8"
CRO1010033	3/16"
CRO1010051	1/4"
CRO1010079	5/16"
CRO1010097	3/8"
CRO1010113	7/16"
CRO1010131	1/2"
CRO1010159	9/16"
CRO1010177	5/8"
CRO1010195	3/4"
CRO1010211	7/8"
CRO1010239	1"



Import Malleable Cable Clips

Electro Galvanized

Torque values shown are based on clean unlubricated threads.

Not designed for load carrying purposes.

	Wire Size	Min # Clips Required	Torque lbs/ft
WEIWC116M	1/16"	3	2
WEIWC18M	1/8"	3	3
WEIWC316M	3/16"	3	4.5
WEIWC14M	1/4"	3	15
WEIWC516M	5/16"	3	15
WEIWC38M	3/8"	3	30
WEIWC716M	7/16"	4	40
WEIWC12M	1/2"	4	45
WEIWC916M	9/16"	4	50
WEIWC58M	5/8"	4	75
WEIWC34M	3/4"	5	75
WEIWC78M	7/8"	5	130
WEIWC1M	1"	6	130
WEIWC118M	1 1/8"	7	200



Now serving all your If you don't see what you need...

Cable & Hardware Accessories

Screw Pin Anchor Shackles

Crosby®

• **Import** •



G-209 Galvanized	S-209 Painted	Nominal Size	WLL (tons)	Galvanized
CRO1018357	NA	1/6"	1/2	WEISHA316LR
CRO1018375	CRO1018384	1/4"	1/2	WEISHA14LR
CRO1018393	CRO1018400	5/16"	3/4	WEISHA516LR
CRO1018419	CRO1018428	3/8"	1	WEISHA38LR
CRO1018437	CRO1018446	7/16"	1 1/2	WEISHA716LR
CRO1018455	CRO1018464	1/2"	2	WEISHA12LR
CRO1018473	CRO1018482	5/8"	3 1/4	WEISHA58LR
CRO1018491	CRO1018507	3/4"	4 3/4	WEISHA34LR
CRO1018516	CRO1018525	7/8"	6 1/2	WEISHA78LR
CRO1018534	CRO1018543	1"	8 1/2	WEISHA1LR
CRO1018552	CRO1018561	1 1/8"	9 1/2	WEISHA118LR
CRO1018570	CRO1018589	1 1/4"	12	WEISHA114LR
CRO1018598	CRO1018605	1 3/8"	13 1/2	WEISHA138LR
CRO1018614	CRO1018623	1 1/2"	17	WEISHA112LR
CRO1018632	CRO1018641	1 3/4"	25	WEISHA134LR
CRO1018650	CRO1018669	2"	35	WEISHA2LR
CRO1018678	CRO1018687	2 1/2"	55	WEISHA212LR



Anchor Bolt Type Shackles

Crosby®

• **Import** •



G-2130 Galvanized	S-2130 Painted	Nominal Size	WLL (tons)	Galvanized
CRO1019464	NA	3/16"	1/2	NA
CRO1019466	NA	1/4"	1/2	NA
CRO1019468	NA	5/16"	3/4	NA
CRO1019470	NA	3/8"	1	WEISHA38LRBT
CRO1019471	NA	7/16"	1 1/2	NA
CRO1019472	CRO1019481	1/2"	2	WEISHA12LRBT
CRO1019490	CRO1019506	5/8"	3 1/4	WEISHA58LRBT
CRO1019515	CRO1019524	3/4"	4 3/4	WEISHA34LRBT
CRO1019533	CRO1019542	7/8"	6 1/2	WEISHA78LRBT
CRO1019551	CRO1019560	1"	8 1/2	WEISHA1LRBT
CRO1019579	CRO1019588	1 1/8"	9 1/2	WEISH118LRBT
CRO1019597	CRO1019604	1 1/4"	12	WEISHA114LRBT
CRO1019613	CRO1019622	1 3/8"	13 1/2	WEISHA138LRBT
CRO1019631	CRO1019640	1 1/2"	17	WEISHA112LRBT
CRO1019659	CRO1019668	1 3/4"	25	WEISHA134LRBT
CRO1019677	CRO1019686	2"	35	WEISHA2LRBT
CRO1019695	CRO1019702	2 1/2"	55	WEISHA212LRBT



Tower Component needs. Call us. We have it. 800-927-2170.

Cable & Hardware Accessories



Dillon® Quick-Check Tension Meters

The Fastest Cable Tension Meter

The Dillon Quick-Check can be placed on a cable, measure its tension, and removed in under five seconds! There are no complex lookup tables, no conversion charts. The operator can quickly select from 15 different wire sizes and types stored in Quick-Check's memory. The Check-Tensioning mode graphically displays the current and target tensions for extremely quick setting of line tension. Even the infrequent battery changes are quick.

Broad Application

Typical applications include tower and stack guy wires, pretensioned cable barriers, bridges, elevators, winch rope, overhead electric transit wires, fall arrest systems, aircraft cables and utilities.

- **Tension capacities:** 2000 lb/10 kN/1000 kg; 10,000 lb/45 kN/4500 kg
- **Wire sizes:** 3/16 inch through 1 inch
- **Accuracy:** + 3% instrument capacity (calibrated to specific wire size & type + 5% with same wire diameter as calibrated but different wire type)
- **Loading error:** Cable elongation of only 0.08 inch (2 mm)
- **Display:** Dot-graphic LCD display supports full text and 1 inch high digits.
- **Sheave range:** Rated wire size and 1/2" smaller. Multiple sheave sets may be used.
- **Suggested wire calibrations:** Calibrate each wire diameter needed with the most appropriate sheaves. If two wire types are used of the same diameter (e.g. 1/2" 1 x 7 and 1/2" 6 x 19), calibrate each type independently if accuracy is critical.
- **Environment protection:** Suitable for continued outdoor use
- **Operating range:** -4°F to 140°F (-20°C to 60°C)
- **Recalibration:** At user discretion. Commonly 24 months but should be more frequently with heavy use. Factory recalibrations conducted typically in 2-4 days.
- **Size:** 10 x 23 x 3 inch (25 x 59 x 8 cm) • **Weight:** Approximately 11 lb (5 kg)
- **Approvals:** CE
- **Power Source:** Uses popular AA batteries and has long life between changes

Capacity & Resolution

DIL362890022	2,000 x 2 lbf
DIL36289.9514	10,950 x 10 lbf

Sheaves Wire Size Code

DIL3630.9544	3/16-1/2"	P
DIL3630.9510	1/4-3/4"	S
DIL362930109	1/2-1"	T

Calibration Number of Sizes

FIRST CALIBRATION IS FREE	
DILCALIBRATE	2-5
DILCALIBRATE10	6-10
DILCALIBRATE15	11-15

Carrying case

DIL36328.9517	Carrying Case for Meter
---------------	-------------------------



Galvanized Guy Strand

	Galvanized Strand Size	No. of Wires	Breaking Strength (lbs)
NAT316EHS	3/16"	7	3,990
NAT14EHS	1/4"	7	6,650
NAT516EHS	5/16"	7	11,200
NAT38EHS	3/8"	7	15,400
NAT716EHS	7/16"	7	20,800
NAT12EHS	1/2"	7	26,900
NAT916EHS	9/16"	7	35,000
NAT58EHS	5/8"	7	42,400
NAT1116EHS	1 1/16"	19	54,000
NAT34EHS	3/4"	19	58,300
NAT78EHS	7/8"	19	79,700
NAT1EHS	1"	19	104,500

*Special cut lengths are available.

Dillon® 5" (127 mm) AP Dynamometers

(Accuracy +/- 0.5% of full range, 20% tare adjustment)

Standard model AP Dynamometer includes: dynamometer, shackles and pins, maximum pointer, zero adjust for tare, molded plastic carrying case on 5" models and calibration certificate.

Item #	Capacity & Dial Divisions in lb.
DIL300060019	500 x 5
DIL300060027	1000 x 10
DIL300060035	2000 x 20
DIL300060043	4000 x 25
DIL300060050	5000 x 50
DIL300060076	8000 x 50
DIL300060084	10,000 x 100
DIL300060092	15,000 x 100
DIL300060100	20,000 x 200



Now serving all your If you don't see what you need...

Cable & Hardware Accessories

Dixon® Heavy-Duty Banding Tool

A must-have tool for the ease of tightening stainless steel banding. A built-in cutter and a handle that screws the banding to desired tension.

DIX51960



BAND-IT® Clamping Tools

Clamping Tool

Use to apply band, strapping and Free-End Clamps. Spring-loaded gripper lever and friction-held cutoff lever with plastic grip improves ease-of-use.

BANC00169



Center Punch Clamping Tool

Ratchet action tensioning tool for applying Center Punch and Center Punch Open-End clamps with a Center Punch style lock. 3/8" adapter included.

BANT30069



ACT™ Intermediate and Heavy-Duty Cable Ties

- Manufactured from high-quality nylon 6/6.
- Angled tail features finger grips
- One-piece design, transition rails, and teeth provide a low insertion force and a high tensile strength.

	Length	Quantity/ Case
Intermediate (40 lb. Tensile Strength, UV Black)		
ACTAL05400C	5.7"	10,000
ACTAL08400C	8.8"	10,000
ACTAL11400C	11.5"	10,000
ACTAL14400C	14.5"	10,000
Heavy Duty (120 lb. Tensile Strength, UV Black)		
ACTAL081200C	8.7"	3,000
ACTAL141200L	15.1"	2,000
ACTAL181200C	17.75"	1,000
ACTAL241200L	24.2"	500
ACTAL281200L	28.0"	500

Stainless Steel Banding

Stainless steel banding is great for around monopoles, utility poles and any big diameter type applications. Fully rounded edges for safety and easy installation. Banding tool suggested for installation.

Item #	Size	Length
SPE5FSS5001	1/2"	100'
SPE5FSS7501	3/4"	100'



Stainless Steel Buckles

For use with banding (above)

Item #	Size	Qty
SPE5FCS5001	1/2"	100
SPE5FCS7501	3/4"	50



Tuf-Tug® Monopole Anchor

This hardware is designed to make tying off to step bolts safe and easy!
TUFMPA

Tuf-Tug® Angled Monopole Anchor

- 90° angle anchors
 - Sold as a set: 1 left, 1 right
- TUF11515490SET



Buckingham™ Step Bolts

These step bolts are for new construction, simply use the step bolt with the anchor built in.

Item #	Size
BUC3058	5/8"
BUC3075	3/4"



Tower Component needs.

Call us. We have it. 800-927-2170.

Cable & Hardware Accessories



ASTM A325 Galvanized Bolt Assembly

Each assembly includes one (1) ASTM A325 Bolt, one (1) A563 Grade DH or A194 Grade 2H Hex Nut, and one (1) Lock Washer. All parts are galvanized in accordance with ASTM A153.

1/2" Diameter

Item #	Length	Wt.
TCPC40026001	1" long, (full thread)	0.30 lbs
TCPC40026003	1 1/2" long, 1" thread length	0.30 lbs
TCPC40026005	2" long, 1" thread length	0.30 lbs
TCPC40026007	2 1/2" long, 1" thread length	0.30 lbs
TCPC40026009	3" long, 1" thread length	0.40 lbs
TCPC40026011	3 1/2" long, 1" thread length	0.40 lbs
TCPC40026013	4" long, 1" thread length	0.40 lbs

5/8" Diameter

Item #	Length	Wt.
TCPC40026021	1 1/2" long, 1 1/4" thread length	0.40 lbs
TCPC40026023	2" long, 1 1/4" thread length	0.50 lbs
TCPC40026025	2 1/2" long, 1 1/4" thread length	0.50 lbs
TCPC40026027	3" long, 1 1/4" thread length	0.60 lbs
TCPC40026029	3 1/2" long, 1 1/4" thread length	0.60 lbs
TCPC40026031	4" long, 1 1/4" thread length	0.60 lbs
TCPC40026033	4 1/2" long, 1 1/4" thread length	0.70 lbs
TCPC40026035	5" long, 1 1/4" thread length	0.70 lbs
TCPC40026036	5 1/2" long, 1 1/4" thread length	0.80 lbs
TCPC40026037	6" long, 1 1/4" thread length	0.80 lbs
TCPC40026038	6 1/2" long, 1 1/4" thread length	0.90 lbs
TCPC40026039	7" long, 1 1/4" thread length	0.90 lbs
TCPC40026040	7 1/2" long, 1 1/4" thread length	0.90 lbs

3/4" Diameter

Item #	Length	Wt.
TCPC40026041	1 1/2" long, 1 3/8" thread length	0.60 lbs
TCPC40026043	2" long, 1 3/8" thread length	0.70 lbs
TCPC40026045	2 1/2" long, 1 3/8" thread length	0.80 lbs
TCPC40026047	3" long, 1 3/8" thread length	0.80 lbs
TCPC40026049	3 1/2" long, 1 3/8" thread length	0.90 lbs
TCPC40026051	4" long, 1 3/8" thread length	1.00 lbs
TCPC40026053	4 1/2" long, 1 3/8" thread length	1.00 lbs
TCPC40026055	5" long, 1 3/8" thread length	1.10 lbs
TCPC40026056	5 1/2" long, 1 3/8" thread length	1.10 lbs

7/8" Diameter

Item #	Length	Wt.
TCPC40026057	2" long, 1 1/2" thread length	1.00 lbs
TCPC40026059	2 1/2" long, 1 1/2" thread length	1.10 lbs
TCPC40026061	3" long, 1 1/2" thread length	1.20 lbs
TCPC40026063	3 1/2" long, 1 1/2" thread length	1.30 lbs
TCPC40026065	4" long, 1 1/2" thread length	1.40 lbs
TCPC40026067	4 1/2" long, 1 1/2" thread length	1.50 lbs
TCPC40026069	5" long, 1 1/2" thread length	1.60 lbs
TCPC40026070	5 1/2" long, 1 1/2" thread length	1.60 lbs

1" Diameter

Item #	Length	Wt.
TCPC40026071	2 1/2" long, 1 3/4" thread length	1.50 lbs
TCPC40026073	3" long, 1 3/4" thread length	1.60 lbs
TCPC40026075	3 1/2" long, 1 3/4" thread length	1.70 lbs
TCPC40026077	4" long, 1 3/4" thread length	1.80 lbs
TCPC40026079	4 1/2" long, 1 3/4" thread length	2.00 lbs
TCPC40026081	5" long, 1 3/4" thread length	2.10 lbs
TCPC40026082	5 1/2" long, 1 3/4" thread length	2.20 lbs

1 1/8" Diameter

Item #	Length	Wt.
TCPC40026096	2 1/2" long, 2" thread length	2.00 lbs
TCPC40026098	3" long, 2" thread length	2.10 lbs
TCPC40026100	3 1/2" long, 2" thread length	2.20 lbs
TCPC40026102	4" long, 2" thread length	2.40 lbs
TCPC40026104	4 1/2" long, 2" thread length	2.50 lbs
TCPC40026106	5" long, 2" thread length	2.70 lbs

1 1/4" Diameter

Item #	Length	Wt.
TCPC40026083	2 1/2" long, 2" thread length	2.50 lbs
TCPC40026085	3" long, 2" thread length	2.70 lbs
TCPC40026087	3 1/2" long, 2" thread length	2.80 lbs
TCPC40026089	4" long, 2" thread length	3.00 lbs
TCPC40026091	4 1/2" long, 2" thread length	3.20 lbs
TCPC40026093	5" long, 2" thread length	3.40 lbs

1 1/2" Diameter

Item #	Length	Wt.
TCPC40026133	5" long, 2 1/4" thread length	5.20 lbs
TCPC40026113	5 1/2" long, 2 1/4" thread length	5.30 lbs
TCPC40026114	6" long, 2 1/4" thread length	5.50 lbs
TCPC40026115	6 1/2" long, 2 1/4" thread length	5.80 lbs
TCPC40026116	8" long, 2 1/4" thread length	6.60 lbs

Now serving all your If you don't see what you need...

Cable & Hardware Accessories

Galvanized Hardened Flat Washer



ASTM F436

Flat Washers are galvanized in accordance with ASTM A153.

Item #	Diameter	Wt.
TCPC40031001	3/8"	0.10 lbs
TCPC40031002	1/2"	0.10 lbs
TCPC40031003	5/8"	0.10 lbs
TCPC40031004	3/4"	0.20 lbs
TCPC40031005	7/8"	0.20 lbs
TCPC40031006	1"	0.20 lbs
TCPC4003101	1 1/8"	0.25 lbs
TCPC40031012	1 1/4"	0.30 lbs
TCPC40031007	1 1/2"	0.40 lbs
TCPC40031008	1 3/4"	0.50 lbs
TCPC40031009	2"	0.70 lbs
TCPC40031010	2 1/4"	0.90 lbs

ASTM A563 Grade A Galvanized Heavy Hex Jam Nut for Anchor Bolt



Hex Jam Nuts are galvanized in accordance with ASTM A153.

Item #	Diameter	Wt.
TCPC40043001	3/4"	0.10 lbs
TCPC40043002	1"	0.20 lbs
TCPC40043003	1 1/2"	0.70 lbs
TCPC40043004	1 3/4"	1.10 lbs
TCPC40043005	2"	1.60 lbs

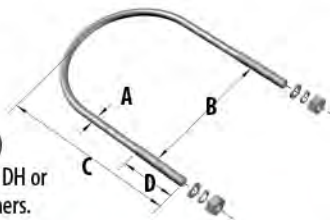
Galvanized U-Bolt Assembly

All parts are galvanized in accordance with ASTM A153.

Stress relieved prior to galvanizing. (Custom U-Bolts available upon request.)

Each assembly includes one (1) ASTM A36 U-Bolt, two (2) ASTM A563 Grade DH or A194 Grade 2H Heavy Hex Nuts, two (2) Flat Washers, and two (2) Lock Washers.

Item #	Dia	Dimensions	Thread Length	Fits OD	Wt.
TCPUB238	1/2"	2 7/8" wide x 5 3/8" long	3"	2 1/4" & 2 3/8"	1.10 lbs
TCPUB278	1/2"	2 1 5/8" wide x 5 3/4" long	3"	2 3/4" & 2 7/8"	1.20 lbs
TCPUB312	1/2"	3 3/8" wide x 6 1/2" long	3"	3 1/2"	1.30 lbs
TCPUB412	1/2"	4 3/8" wide x 7 1/2" long	3"	4 1/2"	1.40 lbs



Galvanized Lock Washer



Lock Washers are galvanized in accordance with ASTM A153.

Item #	Diameter	Wt.
TCPC40030010	3/8"	0.10 lbs
TCPC40030011	1/2"	0.10 lbs
TCPC40030012	5/8"	0.10 lbs
TCPC40030013	3/4"	0.10 lbs
TCPC40030014	7/8"	0.10 lbs
TCPC40030015	1"	0.10 lbs
TCPC40030017	1 1/8"	0.10 lbs
TCPC40030018	1 1/4"	0.20 lbs
TCPC40030016	1 1/2"	0.20 lbs
TCPC40030019	1 3/4"	0.30 lbs
TCPC40030020	2"	0.40 lbs
TCPC40030021	2 1/4"	0.50 lbs

Galvanized Heavy Hex Nut ASTM A563 Grade DH



Heavy Hex Nuts are galvanized in accordance with ASTM A153.

Item #	Diameter	Wt.
TCPC40027001	3/8"	0.10 lbs
TCPC40027002	1/2"	0.10 lbs
TCPC40027003	5/8"	0.20 lbs
TCPC40027004	3/4"	0.30 lbs
TCPC40027005	7/8"	0.40 lbs
TCPC40027006	1"	0.50 lbs

Galvanized Spring Nuts



Sold as singles.

Use with 1 1/2" Channel.

Item #	Use with Taped Hole Size
TCPSN14	1/4"
TCPSN38	3/8"
TCPSN12	1/2"

Stainless Steel Flat Washer



Item #	Diameter	Wt.
TCPC40020010	1/4"	0.10
TCPC40020011	3/8"	0.10
TCPC40020012	1/2"	0.10
TCPC40020013	5/8"	0.10
TCPC40020014	3/4"	0.20

Stainless Steel Lock Washer



Item #	Diameter	Wt.
TCPC40018001	1/4"	0.10 lbs
TCPC40018002	3/8"	0.10 lbs
TCPC40018003	1/2"	0.10 lbs
TCPC40018004	5/8"	0.10 lbs
TCPC40018005	3/4"	0.10 lbs

Stainless Steel Toothed Lock Washer



Item #	Diameter	Wt.
TCPC40019001	1/4"	0.10 lbs
TCPC40019002	3/8"	0.10 lbs
TCPC40019003	1/2"	0.10 lbs
TCPC40019004	5/8"	0.10 lbs
TCPC40019005	3/4"	0.10 lbs

Tower Component needs.

Call us. We have it. 800-927-2170.

Cable & Hardware Accessories

Stainless Steel Hex Nut



Item #	Diameter	Wt.
TCPC40017001	1/4"	0.10 lbs
TCPC40017002	3/8"	0.10 lbs
TCPC40017003	1/2"	0.10 lbs
TCPC40017004	5/8"	0.10 lbs
TCPC40017005	3/4"	0.20 lbs

Stainless Steel Hardware



Item #	Size and Type
MWUSN14	1/4" Nut
MWUSN38	3/8" Nut
MWUSFW14	1/4" Flat Washer
MWUSFW38	3/8" Flat Washer
MWUSLW14	1/4" Lock Washer
MWUSLW38	3/8" Lock Washer



Unistrut

- Hot Dip Galvanized steel channel
- 10ft lengths



Item #	Size
TCP504D	1 1/4" x 1 1/2" x 10' Square Channel
TCP504S	1 1/4" x 1 3/16" x 10' Shallow Channel
TCP504CW	Vinyl End Cap 1 1/2" x 1 1/2" (white)
TCP504CWS	Vinyl End Cap 1 1/2" x 1 3/16" (white)

Infrastructure Accessories

Item #	Description	Qty
TCPTAGB	Brass Tag	Bag of 10
TCPTAGPUNCH	Brass Tag Punch	1
TCPINFLASTICTAG	Plastic Tag (white)	Bag of 10
TCPINFPOWERTAG	Fiber Tag	Bag of 10
TCPINFWAXEDSTRING	Waxed String, #9 Natural	1
TCPINFFISHPAPER	Grey Fish Paper, .15" thick, 6" x 50' Roll	1
TCPTRVC38	Vinyl Cap for 3/8" threaded rod (black)	Bag of 100
TCPCOLDGLV	Cold Galvanizing Spray	1



Galvanized Plain End Pipe/Angle

Sold as Singles.

Item #	Pipe Size
TCPPM236	2 3/8" x 36"
TCPPM248	2 3/8" x 48"
TCPPM260	2 3/8" x 60"
TCPPM272	2 3/8" x 72"
TCPPM284	2 3/8" x 84"
TCPPM296	2 3/8" x 96"
TCPPM2108	2 3/8" x 108"
TCPPM2120	2 3/8" x 120"
TCPPM2240	2 3/8" x 240"
TCPPM2548	2 7/8" O.D. x 48"
TCPPM2560	2 7/8" O.D. x 60"
TCPPM2572	2 7/8" O.D. x 72"
TCPPM2584	2 7/8" O.D. x 84"
TCPPM2596	2 7/8" O.D. x 96"
TCPPM25108	2 7/8" O.D. x 108"
TCPPM25120	2 7/8" O.D. x 120"
TCPPM25180	2 7/8" O.D. x 180"
TCPPM3572	3 1/2" O.D. x 72"
TCPPM3584	3 1/2" O.D. x 84"
TCPPM3596	3 1/2" O.D. x 96"
TCPPM35108	3 1/2" O.D. x 108"
TCPPM35120	3 1/2" O.D. x 120"
TCPPM35252	3 1/2" O.D. x 252"
TCPPM4572	4 1/2" x 72"
TCPPM4584	4 1/2" x 84"
TCPPM4596	4 1/2" x 96"
TCPPM45108	4 1/2" x 108"
TCPPM45120	4 1/2" x 120"
TCPPM45240	4 1/2" x 240"



Now serving all your If you don't see what you need...

Index

A		G		R	
Angle Adapter, Universal	5	Gate Jumpers	14	Round Member Adapter	9
Angle Adapter For Butterfly Hangers	5	General Support Bracket	5	Round Member T-Arms	3
Angle Adapter For Snap-In Hangers	5	Grip Strut Channel	5	S	
B		Ground Rod Clamp	11	Saf-T-Boom	2
Banding	20	Ground Wire	14	Shackles	18
Banding Tools	20	Grounding Clamps	13	Single Run Coax Block	7
Base Plate Pipe Post Kit	4	Grounding Molds	12, 13	Snap-In Adapter Block	8
Base Shoe Plate	5	Grounding Rod	11	Snap-In Adapter Bracket	9
Bi/Quad Collar Bracket	3	Grounding Starter Kit	14	Snap-In Hanger	7
Bolt Assemblies, Galvanized	21	Guy Anchors	15	Snap-In Tower Standoff	8
Boot Assembly	6	Guy Cable Hardware Kit	15	Standoff Adapter Kit, Universal	7
Brass Tags	23	Guy Strand	19	Spring Nuts, Galvanized	22
Buckles For Banding	20	H		Stackable Snap-In Hangers, Coax	6
Buss Bar Mounting Kits	11	Hanger Adaptor Grommet	6	Standoff Arm	3
Buss Bars	11	Hex Jam Nut, Galvanized	22	Step Bolts	20
Butterfly Hanger	6	Hex Nut, Galvanized, Grade DH	22	T	
C		Hex Nut, Stainless Steel	23	Tension Meter	19
Cable Boot Plugs	8	Hoisting Grips	6	ThermOweld Molds	12, 13
Cable Clips	17	Horse Head	5	ThermOweld Starter Kit	14
Cable Ties	20	I		Thimbles	17
Clamping Tools	20	Ice Clips	17	3M Scotch Vinyl Electrical Tape	8
Click-On Coax Grounding Kit	11	Infrastructure Accessories	23	Toothed Lock Washer, Stainless Steel	22
Cluster Support Bracket	9	J		Tower Standoff Kit	7
Coax Block	7	JMA-PPC Connectors And Tools	10	Tower Standoff, Snap-In Hanger	7
Coax Block Hardware Kits	7	K		Tri-Collar Bracket	3
Coax Ground Kit Tinned, Universal	11	Knock Down Waveguide Ladder Kit	4	Triple-T Trapeze	4
Coax Grounding Kit	11	L		Turnbuckles	16
Cold Galvanizing Spray	23	Lightning Rod	11	U	
Cushion Inserts	6	Location Warning Signs	9	U-Bolt Assembly, Galvanized	22
D		Lock Washer, Galvanized	22	Unistrut	23
Dead-End Grips	17	Lock Washer, Stainless Steel	22	Universal Microwave Mounting Kit	2
Dead-End Sleeves	17	Low Profile Platform Kit	3	Universal Pipe Mounting Kit	2
Deluxe Weather-Proofing Kit	8	M		V	
Direct Burial Pipe Post Kit	4	Mini Cluster Support Bracket	8	Vertical Waveguide Hanger Kit	5
Double Antenna Clamp	2	Monopole Anchors	20	Vinyl Caps For Threaded Rods	23
Dynamometers	19	Monopole Dish Mount	3	W	
E		P		Waveguide Bridge	4
Electrical Tape	8	Pipe To Pipe Crossover Kit	2	Waveguide Standoff Kit	5
Entry Panel	8	Pipe To Pipe Mounting Kit	2	Waxed String	23
F		Plain End Pipe, Galvanized	23	Weather-Proofing Kit	8
Fiber Tags	23	Plastic Tags	23	Weld Metal	13
Fish Paper	23	Q		Wire Lugs	14
Flat Washer, Galvanized	22	Quad Collar Bracket	3	Z	
Flat Washer, Stainless Steel	22	R		Z-Bracket Trapeze Kit	4
Flint Gun	13	S		Z	

Tower Component needs.

Call us. We have it. 800-927-2170.

Midwest Unlimited T-Shirts

MIDWEST UNLIMITED • ORIGINAL DESIGNS •

Check our website for more designs



Midwest Unlimited
Logo T-Shirt
MWUTSHIRT



FRONT LEFT CHEST



American Tower Workers
Calls T-Shirt
MWUAMETOW



FRONT LEFT CHEST



American Tower Workers
High Strung T-Shirt
MWU10200



FRONT LEFT CHEST



American Tower Workers
Backbone T-Shirt
MWU10100



FRONT LEFT CHEST

T-shirts \$24⁹⁵ each
• Buy All Four Designs for \$69⁹⁵ •

S • M • L • XL • 2XL

800-927-2170 • MidwestUnlimited.com





1750 West O Street
Lincoln, NE 68528

All trademarks contained herein are the property of their respective owners. Not responsible for typographical or photographic errors. Prices are subject to change without notice and cannot be guaranteed.

• TOWER COMPONENTS •

VOLUME 1

800-927-2170 • 402-434-5446

Over 100,000 Products from more than 500 Vendors

**FALL PROTECTION • RIGGING • CONSTRUCTION • SAFETY • WORK WEAR
TOWER SUPPLIES AND COMPONENTS • WE SHIP ANYWHERE**